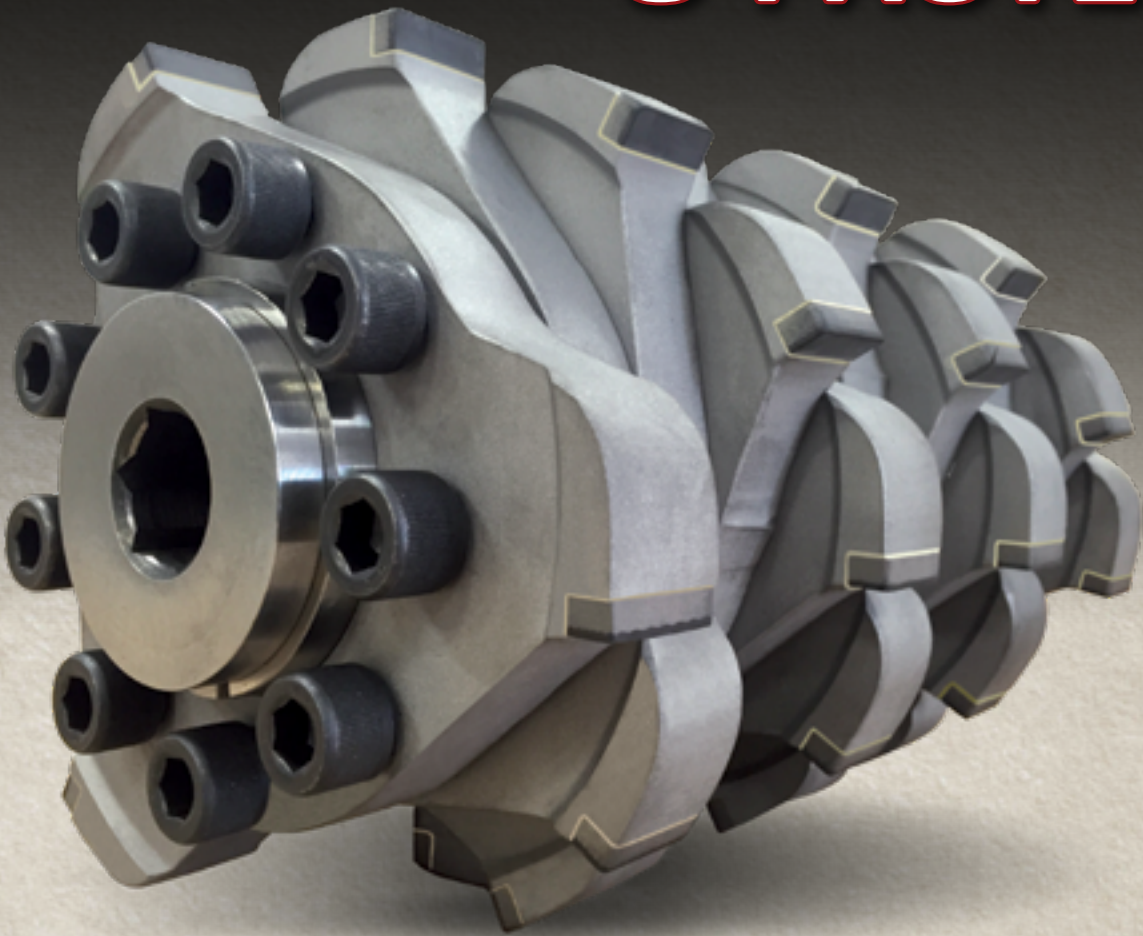


DYNATECH

LINE REMOVAL MADE SO MUCH EASIER & FASTER!



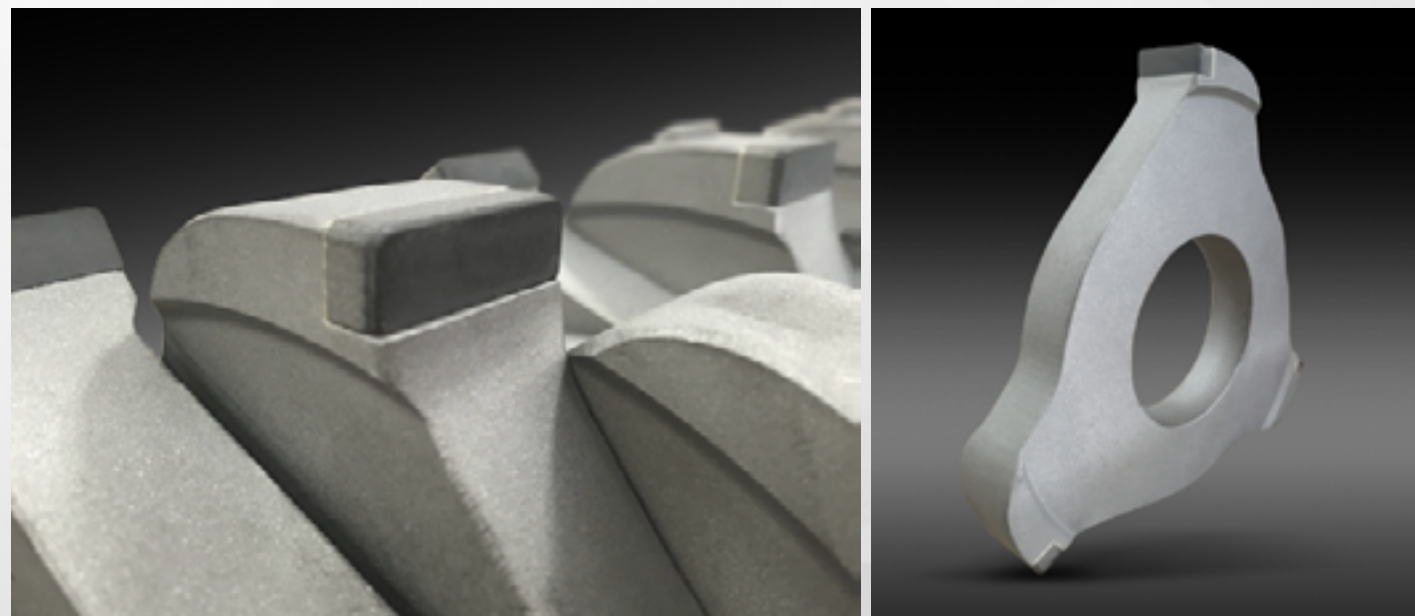
**SAVE TIME
with our PCD Drum!**

**It's FASTER, LASTS LONGER
and gives a
BETTER LOOKING SURFACE!**





- 3-4 times faster and TWICE the life of diamond blades! That's 10 times better than carbide cutters!
- Our system is better engineered and gives a GLASS SMOOTH finish!
- Save time with your road crews and save money on replacement costs
- One drum will out last 15-20 scarify drums! SAVE!
- Save time and man hours rebuilding scarify heads

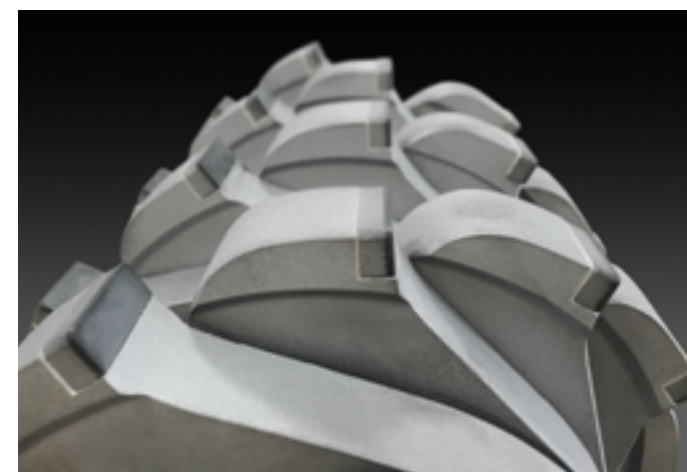


A Totally Different Way to do Line Removal and Inlay

3-4 times faster and TWICE the life of diamond blades – that's 10+ times the life of the carbide cutters!

Turn your scarifying machine into a huge money maker. Our system is better engineered and better built to be much faster and last tons longer than carbide or diamond blades. Note that unlike diamond saw blade sets, the whole PCD head cutting head does NOT touch at the same time, which makes the power more efficient and allows you to do more work faster!

Dynatech's Flat Cutterz for Asphalt and Line Removal give a SMOOTH flat beautiful finish. Dynatech's Rounds for Concrete/Asphalt Inlay and Line removal give the corduroy look like a diamond blade finish. This dramatically changes the possibilities of using your scarifying machine. It makes the power more efficient and allows for the user not to have to change carbide heads so often – both will make your operation more profitable!



Our small diameter heads are powered by 20 hp Graco and Edco units! It makes the power you have more efficient and saves on equipment costs and fuel costs as well!

The PCD Diamonds are stronger so they will allow for faster travel speeds by 2-3 times – this SAVES you money on the amount of time that you are set up and operating on a project – **cuts it BY A THIRD!! - THAT'S PROFIT!!!**

DON'T WASTE PROFIT – PUT IT IN YOUR POCKET!



STOP WASTING TIME AND LABOR CHANGING CARBIDE HEADS! THESE HEADS ARE FASTER AND MAKE YOUR JOB MORE PROFITABLE!

OUR PCD CUTTERZ ARE **BUILT BETTER** TO GIVE YOU THE TRUE ADVANTAGE OVER ANYONE!

PCD - Polycrystalline Diamond

PCD is a composite of diamond particles sintered together with a metallic binder. Diamond is the hardest, and the most abrasion resistant, of all materials. PCD consists of micron-sized synthetic diamond powders bonded together by sintering at high pressures and temperatures. These synthetic Polycrystalline Diamonds are produced using and short and powerful explosion that transforms graphite into the Diamond. The process yields Polycrystalline Diamond Crystals each consisting of thousands of micro crystallites bonded together.

How can PCD's save me money?

- The PCD heads are almost the same cost as diamond saw blade heads
- They last more than 2-3 times as long
- They cut 2-3 times faster
- Thermo Paint and Plasti do not stick to the Cutterz or gum up like carbide/diamond blades
- Choice of either Asphalt Flat Cutterz or Concrete/Asphalt Rounds



Why Dynatech?

We are the ONLY MANUFACTURER OF DIAMONDS AND EQUIPMENT for the Pavement Marking Industry – We are the only ones that make BOTH. Our PCD system is better than any other period – our engineers have over 30 years experience.

Making the Virtgen drums and cutters exclusively here in the U.S. and we put that ingenuity to work in a big way! Our patented system is hands down better designed and better built – the catch is that it is NOT more expensive – let me say that again, OURS IS ACTUALLY LESS EXPENSIVE! And our equipment is matched with the best diamond cutters and blades to give our customers a true advantage over their competition and makes them more profitable.



Family Owned, Family Operated
Trust the industry standard, household
name in pavement marking...
TRUST DYNATECH!

DYNATECH

WWW.DYNATECH.COM

CALL US FOR MORE DETAILS

1-800-446-9001